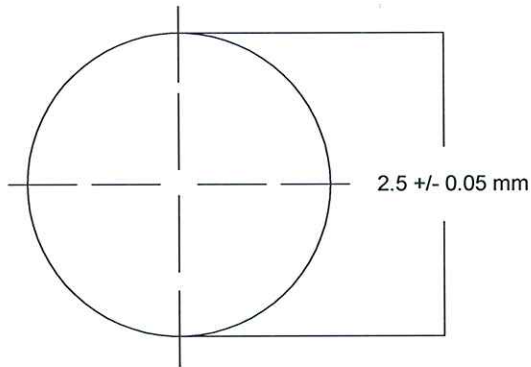


glass bead type I glass (for pharmaceutical use)

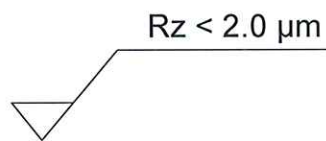
Ø 2,50 +/- 0,05 mm

surface polished

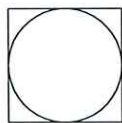
Diameter



Roughness



Sphericity



Ovality max.
0,1 mm

Erstellt, 02.08.2010



Reinhold Schneider, Quality Manager

Reinhold Schneider
Quality Manager
Sigmund Lindner GmbH